

elite bathroomware planner



elitebathroomware
supreme design_ unsurpassed quality



EASY STEPS TO PLANNING YOUR DREAM BATHROOM

A stylish bathroom does not have to be expensive, but to make the best use out of the space available, you need to plan the layout carefully. Follow these simple steps and you will see just how easy it is!

Firstly, on the grid provided carefully draw to scale, the internal dimensions of your bathroom.

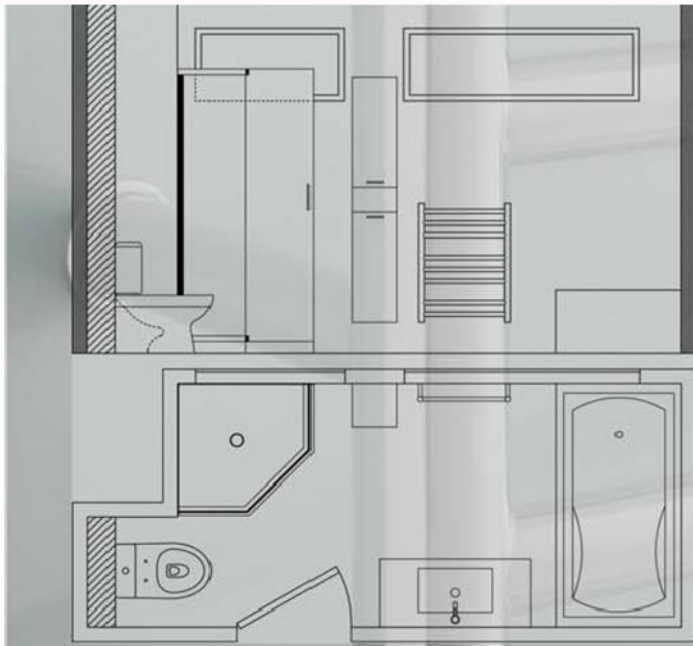
Now, draw in the position of any doors and windows and which side they open. Note beside each window the height between the floor and the sill, this is helpful when placing baths, toilets, and vanities.

If any existing plumbing (taps, shower mixer, inlet pipes, water pipes and toilet waste pipes), or electrical fittings (heaters, electrical points and switches) are to remain. Mark these clearly with a different coloured pen.

Place your selected cutout shapes on the grid and move them around until you find the best layout. Take care to allow enough space around each item for it to be used with ease (don't forget to take door openings into consideration).

Now you can start looking for the ideal products best suited to your plan and budget. Our friendly sales consultants at Elite Bathroomware can assist in finding these products and providing a competitive quotation.

An example of our 2D CAD drawings...



SELECTING THE RIGHT PRODUCTS

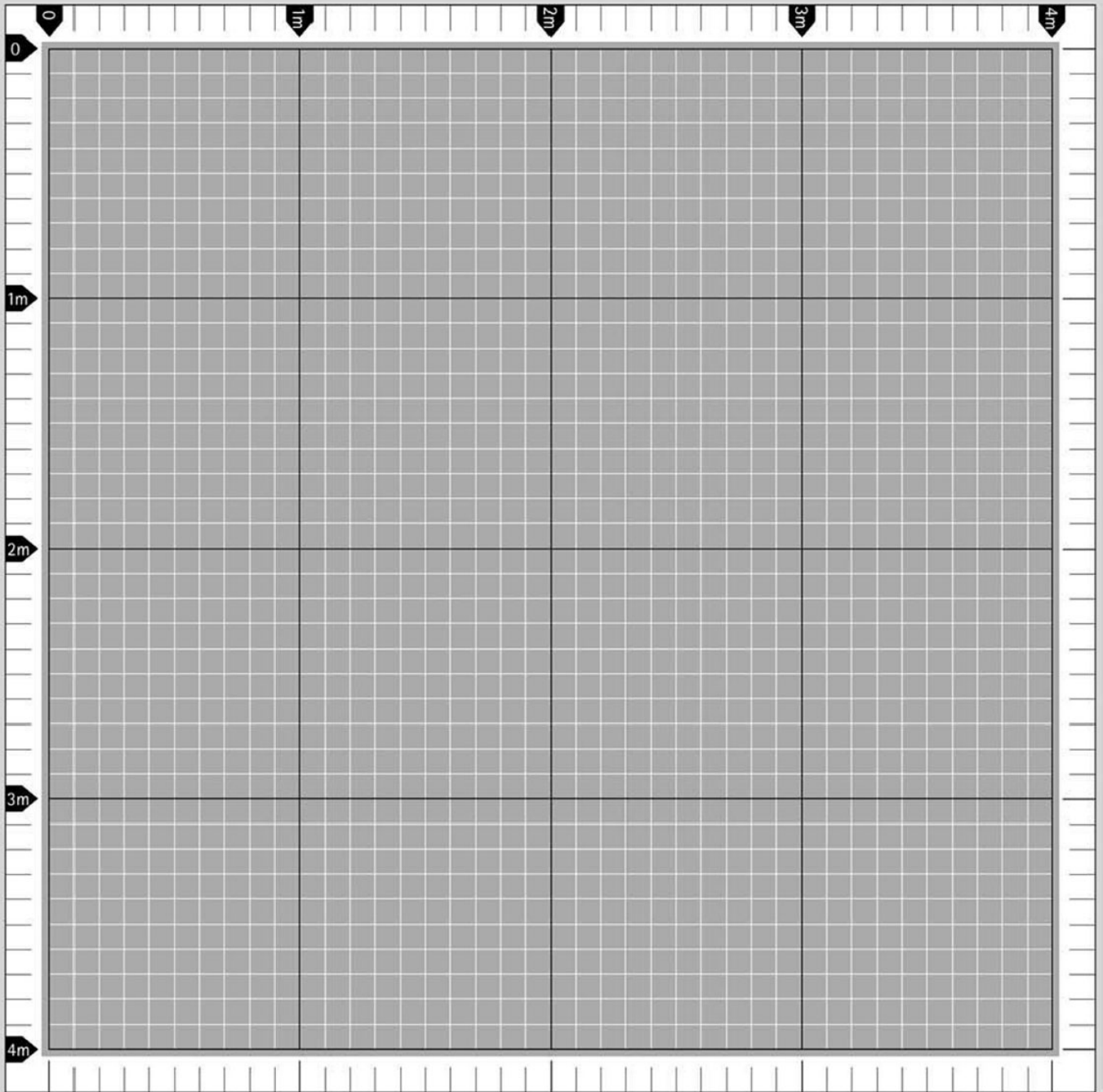
Showers, vanities, baths and toilets are the dominant features of any bathroom. There are so many styles and features available to really enhance the look of your bathroom, adding value to your home without extending your budget. Even the most basic of bathrooms can be transformed with the addition of fresh paint, tiles and accessories.

Things to consider...

- Showers - who will be using the shower, do you need soap holders, which model best suits the style of the house, where the waste is positioned, what type of door system is most practical, cleaning and maintenance.
- Baths - if installing a shower over bath consider the type of screen door to use as a water shield. For baths, consider the size and shape to best suit space, water volumes, power points and where to position tapware and bath spouts.
- Toilets - Do you need a 'P' pan or 'S' pan waste? An 'S' pan exits through the floor and 'P' pan exits through the wall. Try and locate the new toilets near the existing piping and against an exterior wall.
- Vanities - how many people will be using the vanity, how much storage do you need, wallhung or floorstanding? Which finish/colour of vanity and style of basin do you like?
- Tapware - We carry a large range of top-quality tapware from leading tapware manufacturers, we can assist you with your choice and tricky things like water pressure (low or mains).
- Heating & Ventilation - it is very important to have good ventilation to preserve all the hard work you have done. Choose one that best suits the size of your bathroom.



beautiful bathrooms for everyday people



Scale - 1:25 (one small square is 10cm & ten squares is 1 metre)



Use the planner cutouts of Elite Bathroomware's most popular products to design your ideal bathroom space. Try using various shapes and sizes of product combinations that will fit within the space you have available.

Finally, once you have the perfect layout to suit your needs, simply bring the planner into our showroom where our experienced Elite Bathroomware Sales Consultants will help you put the finishing touches on your plan and provide you with a competitive product quotation.

There is also the option to make an appointment with our in-house designers who together with you will re-create your space in 2D form using AutoCAD.

